



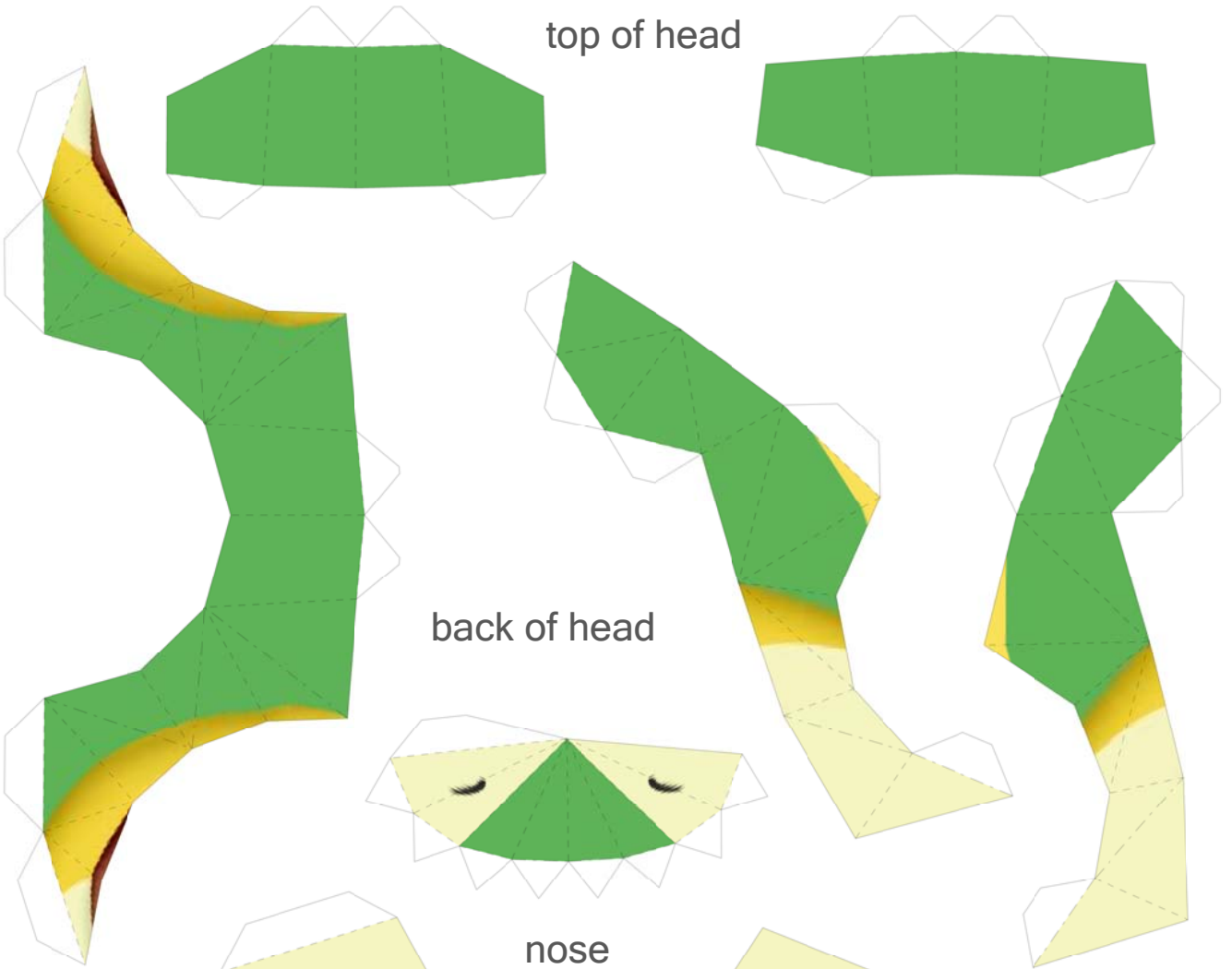
Tsutarja

by PMF & Lyrin

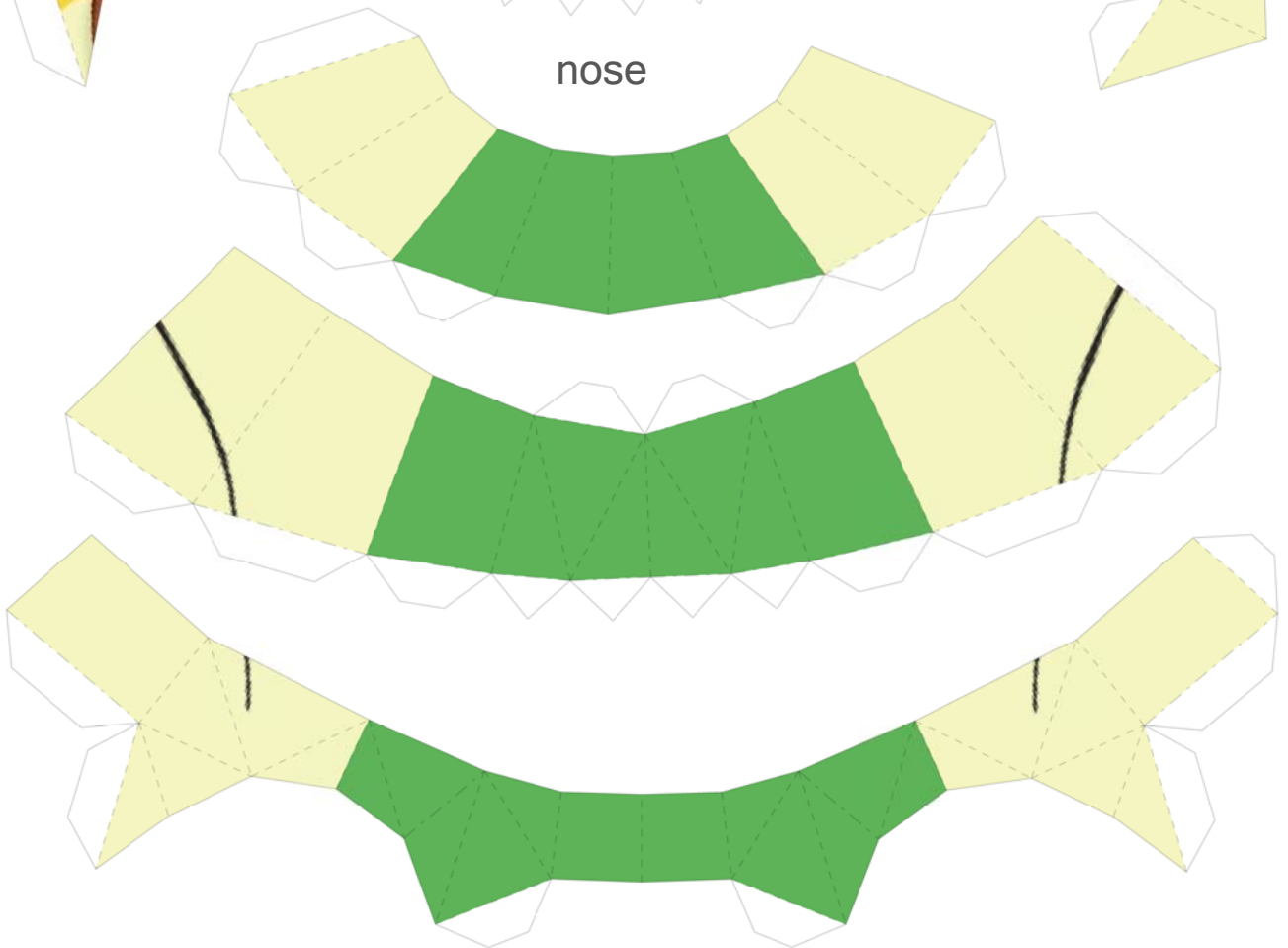
Paper Pokés

WWW.POKEMONPAPERCRAFT.COM

top of head



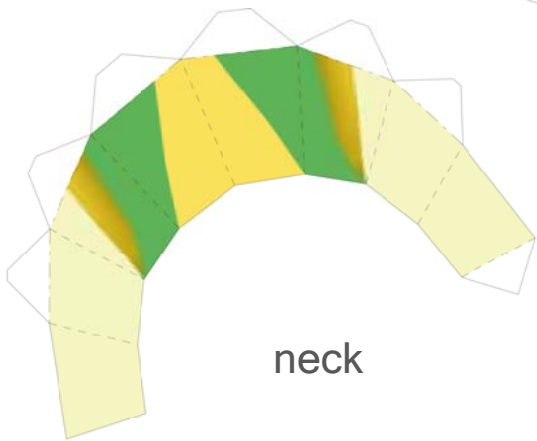
nose



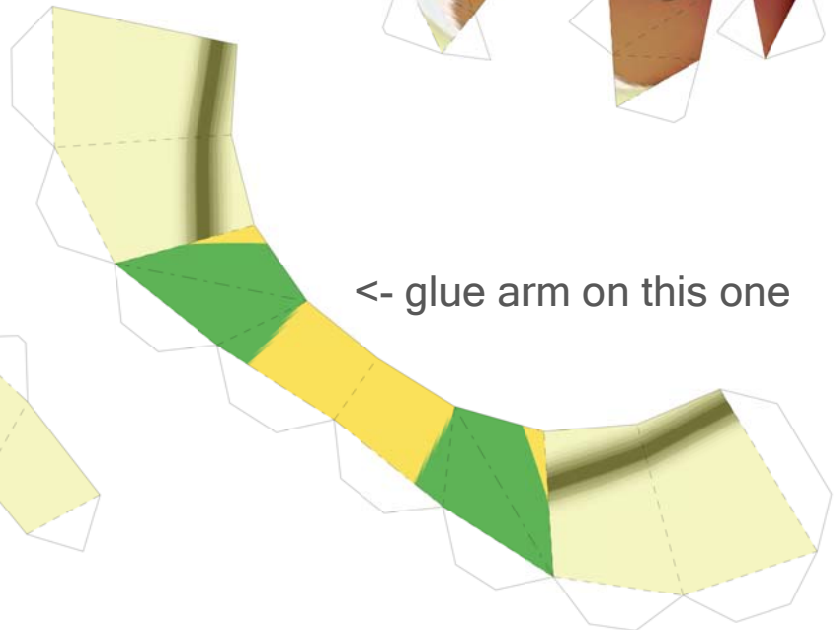
Right eye



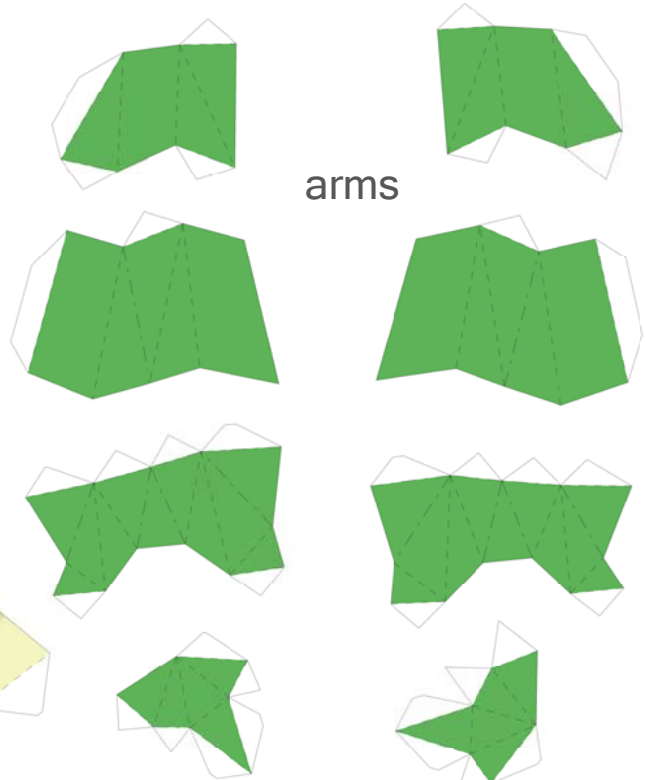
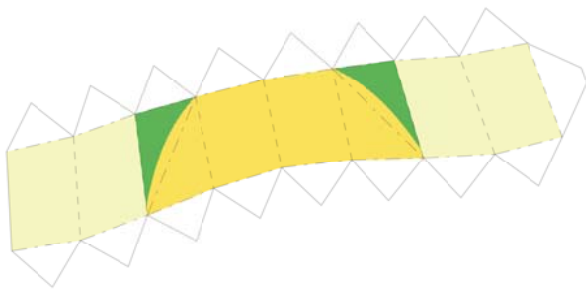
Left eye



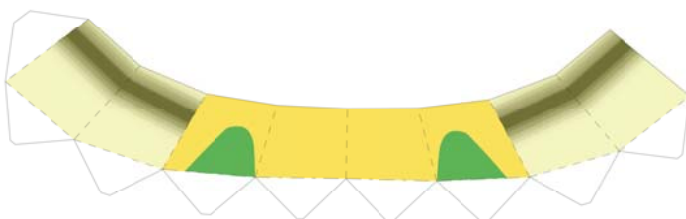
neck



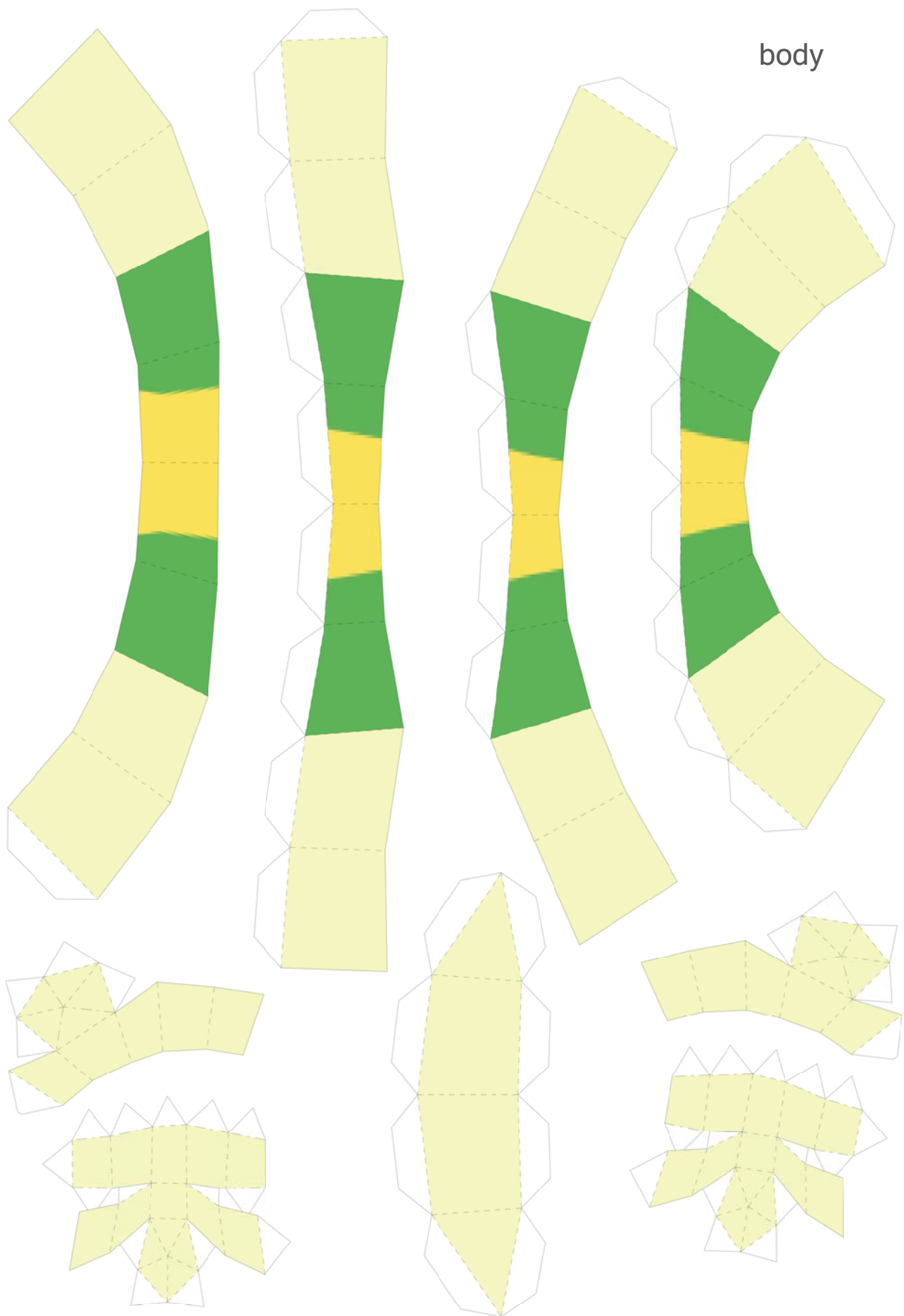
<- glue arm on this one



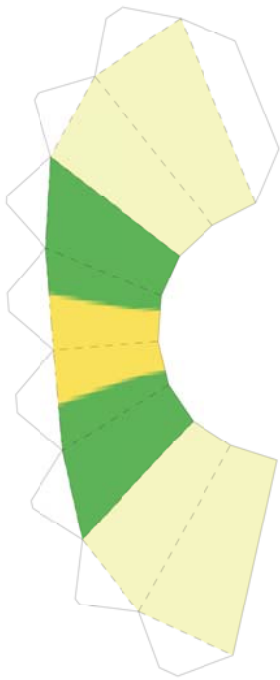
arms



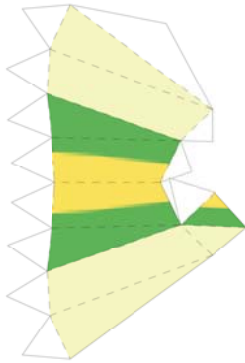
glue collar on this one



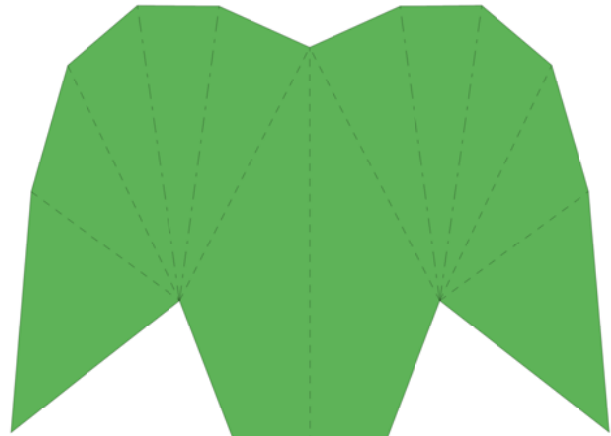
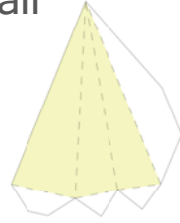
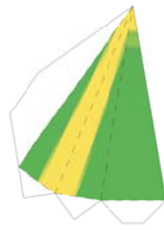
Belly and legs. We recommend gluing the legs before doing tail.



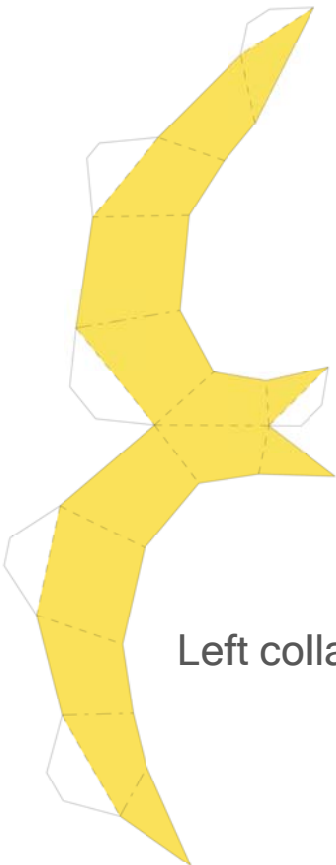
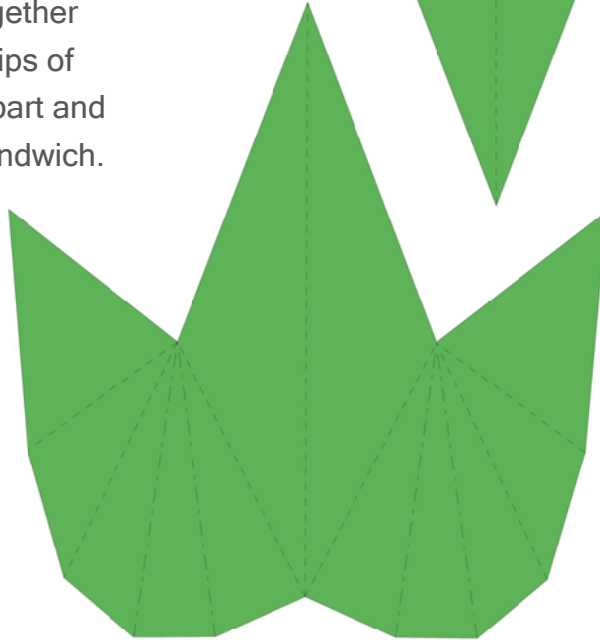
Tail



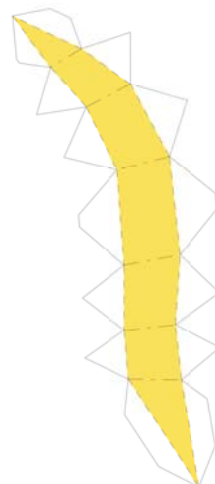
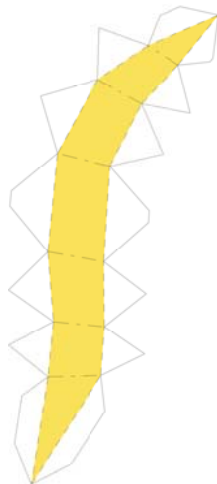
Tips of tail



Glue the 2 big green pieces together back to back. Then glue the 2 tips of tail on each side on the green part and then on the tail. Kinda like a sandwich.



Left collar



Right collar

